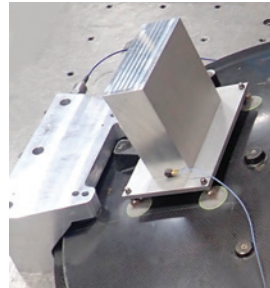
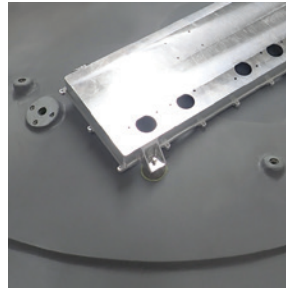


**CLICK
BOND®**

CB4598 GIMBALED STUD

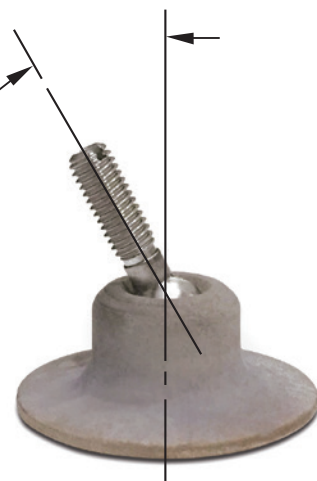
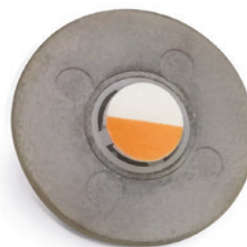
Enables Easy Alignment Across a Curvature

- 30° angular spherical rotation allows for placement on curved surfaces
- Capable of 400-pound+ load*
- Allows customization from a common base
- Reduces design complexity of structure
- Eliminates through-holes
- Reduces installation cost
- Facilitates equipment mounting/adjustment



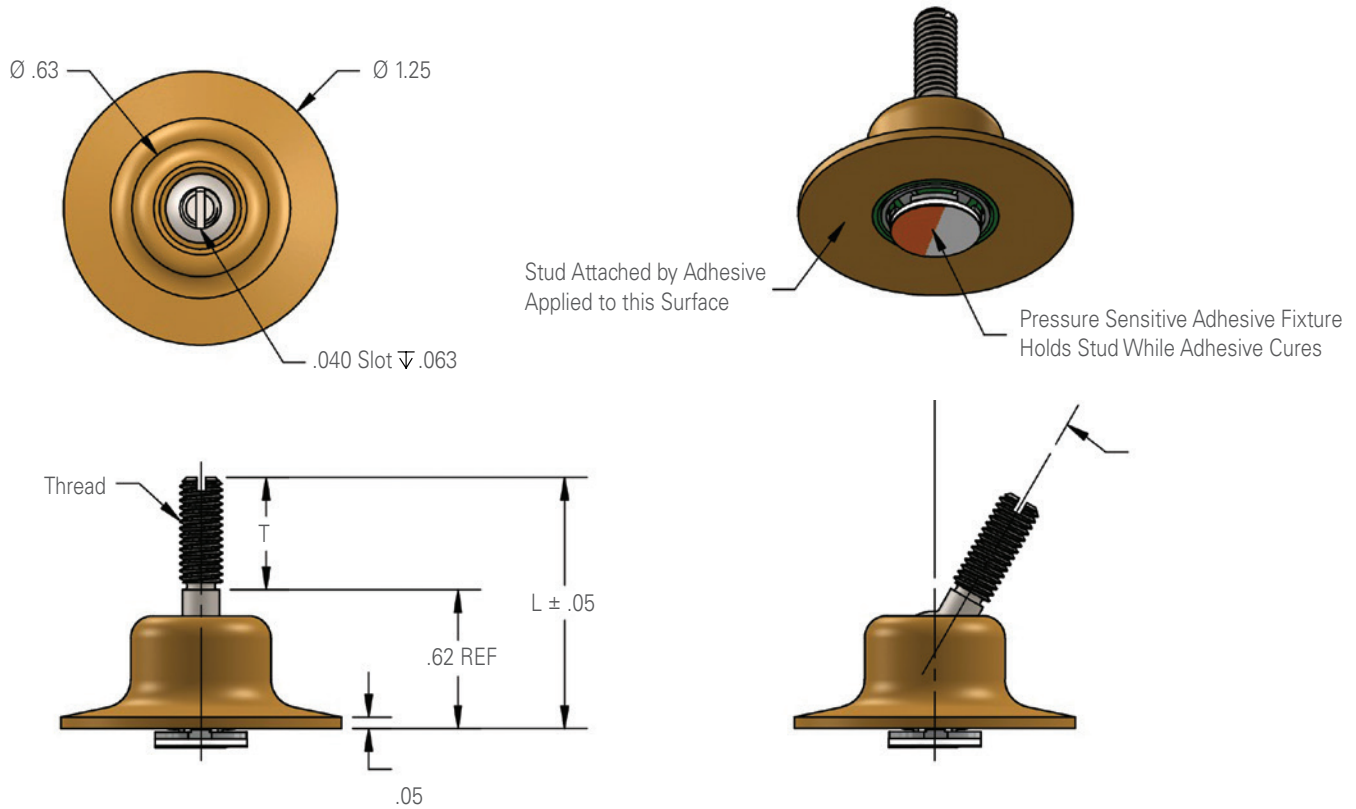
30°

With Max Angular
Spherical Rotation



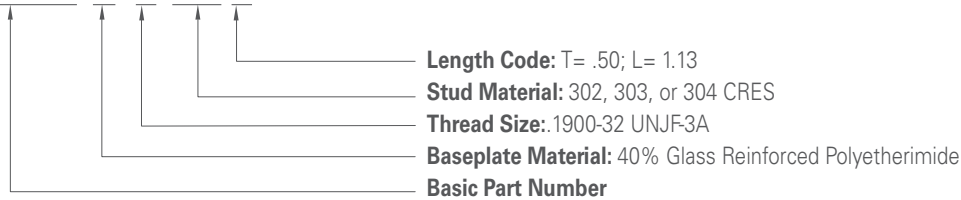
ADHESIVE-BONDED ASSEMBLY TECHNOLOGY

CB4598 Gimbaled Stud | Technical Specifications



Example Part Number

CB4598 V 3 CR 8



Thread Size & Length Options

Thread Size		(L) Lengths			
Code	Size	Code	8	12	16
3	.1900-32 UNJF-3A	T	.50	.75	1.00
		L	1.13	1.38	1.63

Material & Finish Options

Baseplate Material		
Code	Material	Spec
V	40% GLASS PEI (ULTEM 2400 OR EQUAL)	CBMS-101

Stud Material and Finish Data			
Code	Material	Spec	Passivate
CR	302, 303, OR 304 CRES	AMS 5513, 5516, 5636, 5637, 5638, 5639, 5640, 5641, OR 5647	AMS 2700

* NOTE: Load performance is based on substrate the product is bonded to, proper surface preparation, use of recommend adhesive, and properly following all installation instructions.



©2023 Click Bond, Inc. All rights reserved. Click Bond and the stylized logo are trademarks or registered trademarks, of Click Bond, Inc. Registered, U.S. Patent and Trademark Office.

CB7200241-E